

PUMPS



SUMMIT
PUMP, Inc

Summit Pumps and parts are interchangeable with Flowserve, Gorman Rupp, ITT Goulds, Moyno, Peerless, and Viking.

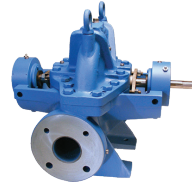
CENTRIFUGAL PUMPS



ANSI



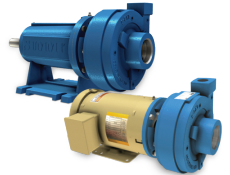
ANSI Self Primer



Split Case



Self Primer /
Trash Pump



Close Coupled /
Frame Mounted

POSITIVE DISPLACEMENT PUMPS



Internal Gear



Progressive Cavity



Progressive Cavity
(Wobble)



Internal Gear



Finish Thompson pumps are designed and built to transfer the toughest fluids in demanding applications.



ANSI UC Sealless
Pumps



Drum/Barrel Pumps
(SS/PP/PVDF)



Self-Priming
Pumps



Sealless Plastic
Pumps



Parts and pumps are interchangeable with Wilden and are available in 1/4"-4" in aluminum, stainless steel, polypropylene, and cast iron.

AIR OPERATED DOUBLE DIAPHRAGM PUMPS



Non-Metallic Double
Diaphragm Pump
Bolted



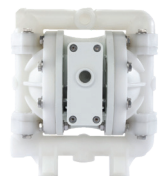
Non-Metallic Double
Diaphragm Pump
Clamped



Metallic Rubber/
TPE-Fitted Air-Operated
Double Diaphragm Pump
Clamped



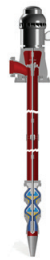
Metallic PTFE-Fitted
Air-Operated
Double Diaphragm Pump
Bolted



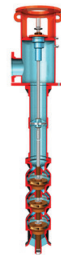
Non-Metallic Rubber/
TPE Fitted Air-Operated
Double Diaphragm
Pump Bolted



National Pump Company manufactures a complete line of vertical lineshaft turbine, submersible, and booster pumps for the agricultural, municipal, petroleum, and industrial-commercial markets.



Vertical Turbine Pumps
Deep Well



Vertical Turbine Pumps
Close Coupled



Vertical Turbine Pumps
API 610



Submersible Turbine Pumps

PUMPS



There when you need us most

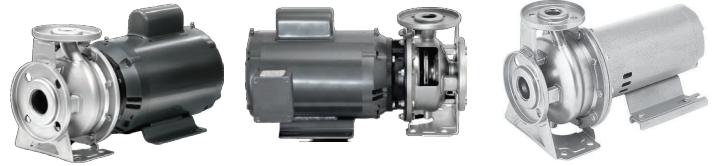
Provides vertical and horizontal multistage booster, stainless steel centrifugal, submersible water well and wastewater, self-priming, in-line, and corrosion resistant end suction centrifugal pumps.

VERTICAL MULTISTAGE BOOSTER PUMP



NV Series

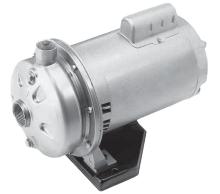
STAINLESS STEEL CENTRIFUGAL PUMPS



FC Series



TC Series



HOMA offers submersible pumps up to 500hp in cast iron and stainless-steel construction available with FM approved explosion proof enclosure.

SUBMERSIBLE PUMPS



Heavy-Duty Solids Handling Pumps



Grinder Pumps



Effluent Pumps



Dewatering Pumps



Stainless Steel Pumps



Mixers



SEAL-LESS
PUMP COMPANY

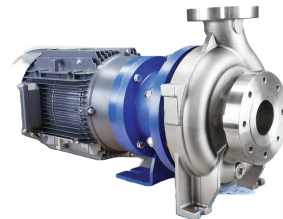
Provides regenerative turbine pumps, centrifugal process pumps, SMCA High Pressure Pumps and Thermoplastic M-Pumps



SCM Centrifugal Process Pump



STM Regenerative Turbine Pump



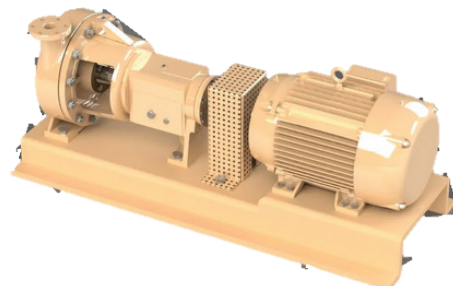
SMCA High Pressure Pump



TECH-MAG M-Series Pump



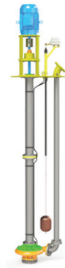
TESLA DISK PUMPS™ are specifically engineered products designed to meet your challenging process requirements.



PUMPS & SEALS

SWABY PUMPS

Built and fully guaranteed by a manufacturer with over 125 years of experience in the design and construction of centrifugal pumps exclusively.



Centrifugal



Volumetric



Side Channel



Manufactures cartridge mechanical and specialized seals for mixers/ agitators, aquariums, and slurries.



Universal Application



Special Application



Precision-Engineered Mechanical Seals: Solutions for Optimizing Rotating Equipment Performance in Diverse Industries.

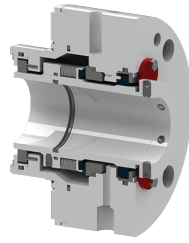
ANSI Seals



VSM3 / VBSMS3

Vantage ANSI Single Cartridge Seal

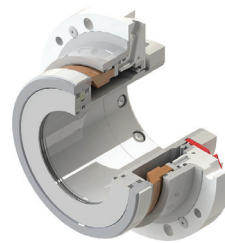
API Seals



53A

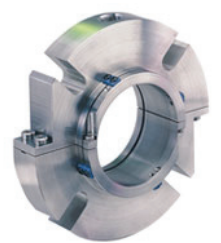
Heavy Duty Rotating Metal Bellows Cartridge Seal

Slurry Pump Seals



Mechanical Seal Style RKCS

Split Cartridge Seals



85

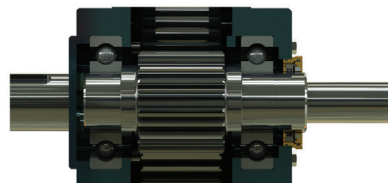
Fully Split Cartridge Mechanical Seal



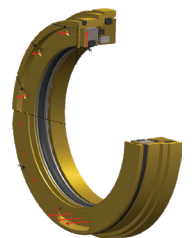
ISOMAG delivers a long-term, liquid-tight seal without heat generation, equipment degradation, lubricant egress or contaminant ingress.



Motor Bearing Seals



Gearbox Seals



Pump Bearing Isolators

BUSINESS LINES

PUMP SALES

Provides a full range of pumps, seals and bearing isolators for complete technical solutions.



EXPERIENCED



MOTOR SALES

Distributor for the major manufacturers; local stock available with Regional and National access.



CUSTOM FABRICATION

In-house machining capabilities reduce long factory lead times on OEM parts.

FIELD SERVICE & REPAIR

Experienced pump technicians available 24/7/365 for field service work.

At Team ABET, we are:

- **Experienced:** We have proudly served our customers in the greater Houston area for over 20 years.
- **Trusted:** We built a hard-earned reputation for being responsive, knowledgeable and focused on YOUR success.
- **Local:** We are a family-owned business with team members who live, work and invest in our local communities.

We look forward to earning your business - CALL US!